

Audit Logger 6.1A

Audit Logger for Sage 300 ERP provides organisations with an auditing tool that registers user actions, security alterations & data modifications. Audit Logger is an important component to delivering a complete internal control solution.

Audit Logger captures a register of user actions performed against each specific view that can be later analysed and reported on.

Audit Logger also captures other user actions performed in Sage 300 ERP such as security settings, batch posting & clearing history.

Audit Logger Product Features

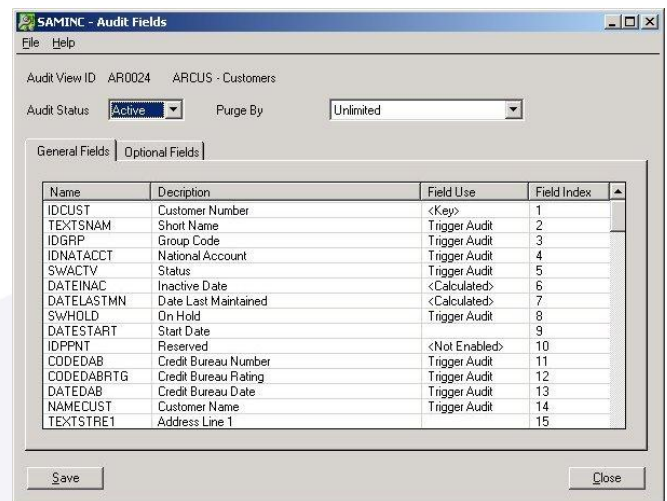
- Captures both before and after details of the audited fields
- For user actions, logs the parameters and values the processing view was called with
- Logs authenticated Windows user name, login domain and IP address from the workstation where the change occurred
- Ignores statistical updates performed by internal posting procedures, a significant performance design feature
- Dynamically handle module upgrades
- Supports all Sage 300 ERP databases
- Audit data held in Sage 300 ERP database for absolute integrity if a company is restored or copied

Audit Logger records all changes to unlimited optional fields as a single transaction along with the primary view inserts, changes and deletions. Administrators can easily define which optional fields require auditing for each view.

Audit Logger operates seamlessly within the Sage 300 ERP environment; many of the product features are simply not achievable with external database level auditing products.

Easy Configuration

An administrator can tailor each individual view, setting the views audited fields and the views audited optional fields to meet their specific requirements.



Alternatively an administrator can quickly use the predefined minimum & maximum setting that can be applied by module or by view.

A finalised configuration can be exported and quickly imported into many companies to reduce the configuration time and ensure consistency in a multi-entity deployment.

Reporting

Reporting can be filtered by view, user or date range and can be limited to just fields that have been changed in the audit.

Audit data can also be exported using standard Sage 300 ERP export functionality, then mined using Excel or Access or more sophisticated applications of the customer's preference.

Availability & System Requirements

Editions: Standard, Advanced & Premium
 Databases: Microsoft SQL Server, Oracle & Pervasive

Audited Modules:

- SM, AS, CS, BK, TX
- GL Setup + Transactions
- AR Setup + Transactions
- AP Setup + Transactions
- IC Setup + Transactions
- OE Setup + Transactions
- PO Setup + Transactions
- US & Canadian Payrolls

Date: 02/04/2005 16:19:09		Sample Company Ltd		Page 89
Audit Log Report (AURPT)				
User ID:	[]			
View:	[]			
Audit Date:	[] to []			
Operations:	[Updates, Insertions, Deletions, Processes]			
Change Only:	Y			
<hr/>				
ARCUS, Customers		Timestamp: 02/04/2005 14:52:23	IP Address: 172.16.6.104	Audit Seq: 1850
Update		User: LR, Lyn Robinson	Network User: PACDEMOASPVlynr_wpl	
<Key>	IDCUST Customer Number	85844		
	SWBALFWD Account Type	<1> Balance Forward	<0> Open Item	
	AMTCRLMT Credit Limit (Cust. Curr.)	15000.000	15000000.000	
<Opt>	APPROVED Approved	BBA		
<Opt>	CARPOL Carpool	N	Y	
<hr/>				
APVEN, Vendors		Timestamp: 02/04/2005 14:57:16	IP Address: 172.16.6.104	Audit Seq: 1851
Insert		User: LR, Lyn Robinson	Network User: PACDEMOASPVlynr_wpl	
<Key>	VENDORID Vendor Number	2513		
	SHORTNAME Short Name		McENTEE HI	
	IDGRP Group Code		CQ1	
	SWACTV Status		1	
	DATEINAC Inactive Date		0	
	DATELASTM Date Last Maintained		20040402	
	SWHOLD On Hold		0	
	DATESTART Start Date		20040402	
	IDPPNT Participant ID			
	VENDNAME Vendor Name		McENTEE HIRE SERVICE LTD	
<hr/>				
APVEN, Vendors		Timestamp: 02/04/2005 15:16:08	IP Address: 172.16.6.108	Audit Seq: 1852
Update		User: JH, John Hamlin	Network User: PACDEMOASPVjohnh_wpl	
<Key>	VENDORID Vendor Number	0800		
	DATELASTM Date Last Maintained	20031208	20040401	
<Opt>	BANKACC Bank Account	0602940024189910	010143008550910	

Pacific Technology Solutions has a long and successful history as a Sage Development Partner developing horizontal and vertical market products for Sage Accpac ERP.

Pacific Technology Solutions also provides advanced customisation services to Business Partners internationally, assisting Sage Accpac ERP to better fit customers' unique requirements.

Please visit our website www.pacifictechsol.com for further information on products and services that Pacific Technology Solutions provides to the Sage Accpac channel.



Development Partner

- Development Partner of the Year 2009 International Award
- Sage Asia Top Development Partner 2008

© 2009, Pacific Technology Solutions Ltd. All rights reserved. Sage Accpac, Sage Accpac ERP are registered trademarks or trademarks of Sage Software, Inc., or its affiliated entities. All other trademarks are the property of their respective owners.

